

GARTHOWEN ESTATE

Right at Tram Terminus

CASTLE HILL

Business Sites,
Residential and Farm Areas.

also Historic Homestead known as **GARTHOWEN**

500 FEET
above Sea Level.
MOUNTAIN AIR
Excellent Views.

CITY WATER
passes the Estate

Terms Lots 17, 33, 35, 36, 37 and 56 excepted.
£2 per Lot Deposit - £1 per lot per month
with Interest at 6%.

For Lots 17, 33, 36, 37 and 56.
5% Deposit, Balance by 20 quarterly
payments. Interest at 6%.

For 'GARTHOWEN' situate on Lot 34.
25% Deposit and balance secured by
Mortgage for 3 years at 6%.

Auction Sale on the Ground at 3.30 p.m.

SAT. 9TH APRIL

1921



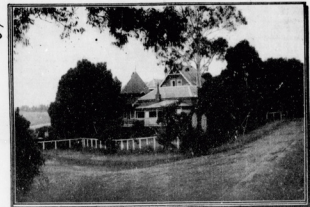
Sellers to the Estate
Garland, Seaborn & Abbott.
Martin Place
Sydney.

Auctioneers

SLADE, BROWN & BLOOMFIELD LTD

in conjunction with **115 Pitt St, Sydney.**
W. T. ARMSTRONG.
George St, Parramatta.
Local Agent.

Interested Parties under the Plan
and Child Endorsement
Hardy, Busby & Norman.
375 George Street
Sydney.



NOTE. All dimensions, etc. are subject to Deposited Plans.