

# CASTLE HILL

IN THE SHIRE OF  
**BAULKHAM HILLS**

PORTIONS OF **SOUTHLEIGH & DARCEY HEY ESTATES**

About 5½ miles from Parramatta.  
Railway Platform within 2  
minutes of the Estate.  
Frequent Motor Bus Service.  
City Water laid on in front of  
every allotment.

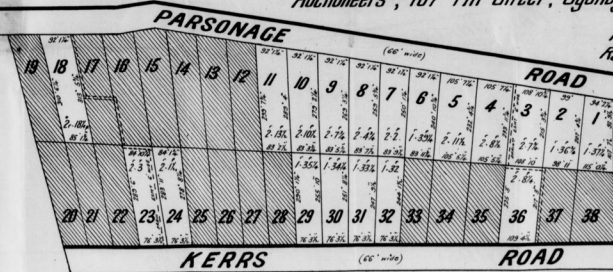
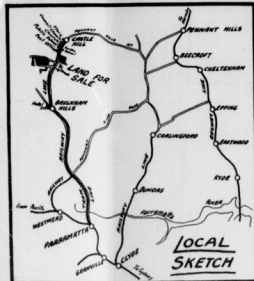
FOR AUCTION SALE ON THE GROUND

**SAT. 18<sup>TH</sup> DECEMBER 1926 AT 3.30 P.M.**

**SHARPE & SON LTD**

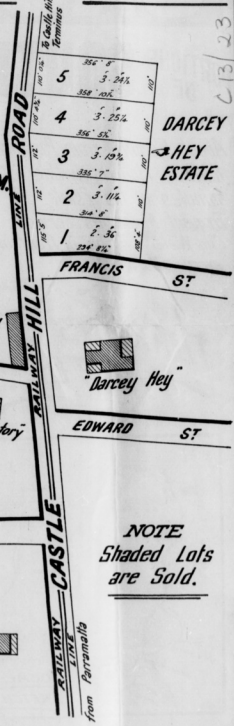
Auctioneers, 107 Pitt Street, Sydney.

**TORRENS  
TITLE.**



**TERMS**  
£5 Per Lot Deposit.  
Balance by instalments of £2 per month.  
Interest 6 Per Cent on quarterly balances.

All Dimensions and Easements are subject to Deposited Plan.



**NOTE**  
Shaded Lots  
are Sold.