

SELLAR'S ESTATE SUBDIVISION

CASTLE HILL

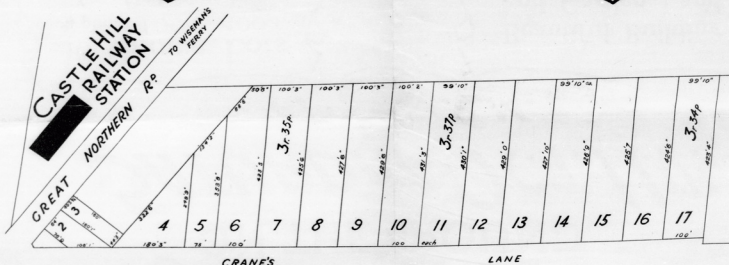
for Auction Sale
ON THE GROUND

SATURDAY OCT. 11TH

AT **3** P.M.

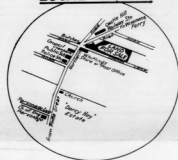
16 Choice Lots
each about 100 by 400 feet
Quite close to
Castle Hill Railway Station
Frequent Motor Service to and
from Parramatta

Beautiful Building
and Garden Land
Right Aspect and Slope
City Water



Terms: £10 per Lot Deposit
Balance 20 Quarterly Instalments
Interest 6 per cent.

TITLE WILL BE TORRENS
LOCAL SKETCH



W. F. JAGO

Auctioneer

Parramatta & Watson's Bay

F. W. TODHUNTER Esq.
Solicitor to the Estate

C13/10