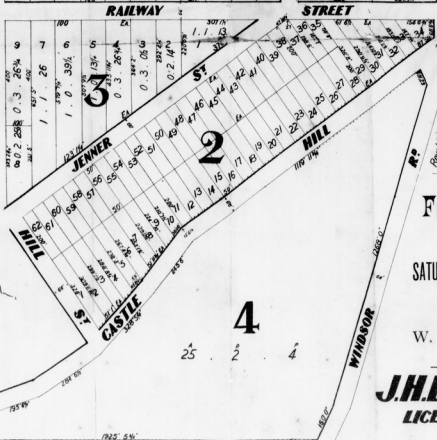
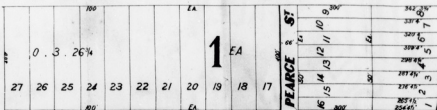
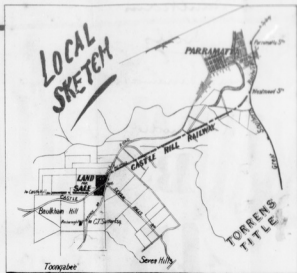


VENDORS

LAND INVESTMENT  
**EXCELSIOR**  
 Building Co and Bank Limited  
 171 YORK ST William Jarrett, Manager

# BAULKHAM HILLS

**TOWNSHIP**  
 THE GARDEN OF NEW SOUTH WALES!



**TERMS VERY EASY.**

Adapted to suit all classes of buyers.

- No. 1-25 per cent. deposit; 25 per cent. allowed on the balance of cost to 2 days.
- No. 2-50 per cent. deposit; balance in 4 quarterly payments without interest.
- No. 51-75 per cent. deposit; balance in 20 quarterly payments, interest 4 per cent.
- No. 76-90 per cent. deposit; balance in 10 quarterly payments, interest 5 per cent.
- No. 91-100 per cent. deposit; balance in 20 quarterly payments, interest 7 per cent.
- No. 101-125 per cent. deposit; balance on Building Society's terms, viz.: 1/2 of the rate of 10. per month for each 25th week.

**EXAMPLE OF TERMS**

Supposing a Farm purchased £200 worth of land on terms—  
 No. 1, he would pay £10 cash, and the balance, less 20 per cent. to the 2nd day.  
 No. 2, he would pay 10 quarterly payments of £25.  
 No. 3, he would pay 20 quarterly payments of £10.  
 No. 4, he would pay 20 quarterly payments of £10, and 20 per cent. to the 2nd day.  
 No. 5, he would pay 20 quarterly payments of £10, and 20 per cent. to the 2nd day.  
 No. 6, he would pay 20 quarterly payments of £10, and 20 per cent. to the 2nd day.  
 No. 7, he would pay 20 quarterly payments of £10, and 20 per cent. to the 2nd day.  
 No. 8, he would pay 20 quarterly payments of £10, and 20 per cent. to the 2nd day.

**For Auction Sale**  
 ON THE GROUND,  
**SATURDAY, FEBRUARY 2nd, 1889,**  
 AT 3 O'CLOCK.  
 W. A. BRODIE & CO.,  
 AUCTIONEERS.

**J.H. LAYCOCK**  
 LICENSED SURVEYOR  
 315 GEORGE ST

89/43