



PLATYPUS TRACK

CASTLE HILL / ERIC MOBS RESERVE

What You Will See: This walk provides the opportunity for views into Coachwood and Excelsior Creeks and then a walk along the shady valleys of these creeks amongst ferns and Coachwood trees. On warm days Eastern Water Dragons can be seen in Excelsior Creek.

Distance: 2.2 kilometres

Grade: Moderate (some steep slopes, two creek crossings on stepping stones)

Time: One and a half hours

Facilities: Toilets are located at the edge of the playing fields in the adjacent Eric Mobbs Reserve

There is a picnic spot at the beginning of the track with tables and a wood fired barbecue.

Track Status: Mostly bush paths with an uneven surface.

Starting Point: The fire trail at the end of Excelsior Avenue, Castle Hill. The track commences at the end of the street.

Directions and Points of Interest:

1. Walk along the fire trail on the left at end of Excelsior Avenue, Castle Hill to a shelter with a map of the area. The Platypus Track is located in Bidjigal Reserve and is managed by the Bidjigal Trust.
2. Follow the concrete path on the right for approx 200 metres along an avenue of Turpentine trees (*Syncarpia glomulifera*). The path then becomes a well graded gravel path. This path is part of the Platypus Track (blue logo). Enjoy the views from the path down into the creek valley below. Follow this path for 850 metres to a track junction with the sign "Loop Track".
3. Turn left here. At the next track junction take the right hand track for about 30 metres for a view of the Blackbutt (*Eucalyptus pilularis*) and Sydney Red Gums (*Angophora*

costata) growing in the valley. Return to the main track and turn right to walk down a steep track of rough sandstone steps.

4. At the bottom of the track there is a T-intersection. Turn left and walk down to Excelsior Creek.

This is a very picturesque spot with Water Gums (*Tristania conferta*) and ferns growing along the banks. The dominant feature is a large sandstone rock where Water Dragons (*Bidjiwongs*) can be seen basking in the sun on warm days.

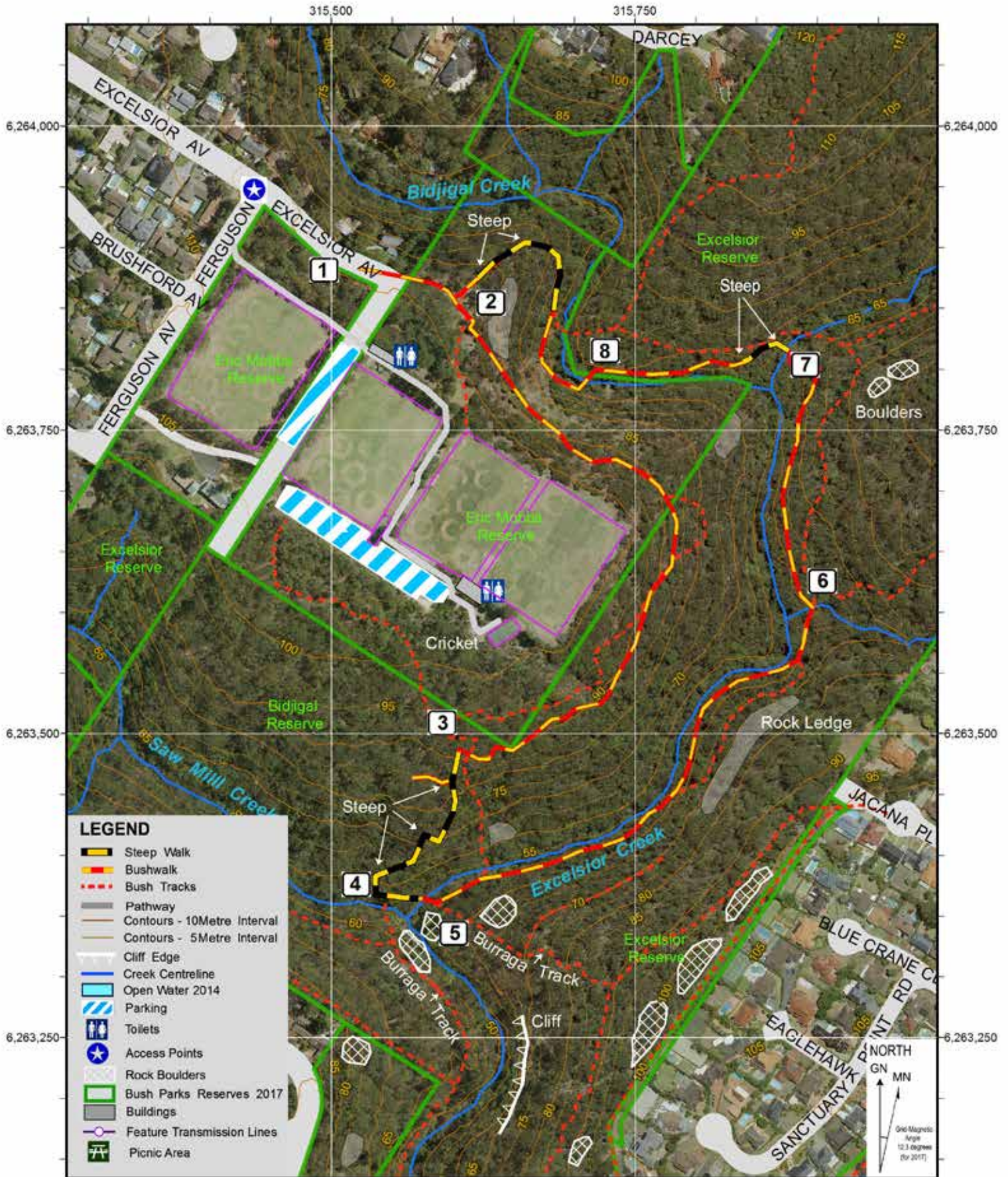
5. Cross the creek on the stepping stones. Be careful here as the rocks may be slippery.

Turn left to follow the track upstream through Coachwoods (*Ceratopetalum apetalum*), Callicomas and Water Gums. A track coming in on the right hand side is the Burruga Track. Continue on the Platypus track. Walk 500 metres to Gahnia Creek.

6. Cross over this creek and take the trail straight ahead with a sign post which reads "Rest Area".

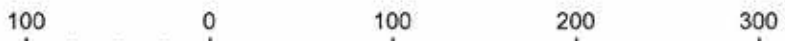
Further along the track you will reach a very large Angophora (*Sydney Red Gum*) growing at the base of a sandstone rock outcrop. There is a cave here to explore and orchids growing on the rocks above.

7. Walk to the bridge and cross over Excelsior Creek which rises in nearby West Pennant Hills. Below the bridge is the junction of Excelsior and Bidjigal Creek. Follow the track along Bidjigal Creek to a weir. This is Loch Bruce which was built by local residents in the 1930's as a swimming spot.
8. Upstream of the weir cross the creek on the concrete stepping stones. Follow the boardwalk and then the path uphill to the shelter. Turn right and take track back to Excelsior Avenue.



THE HILLS
Sydney's Garden Shire

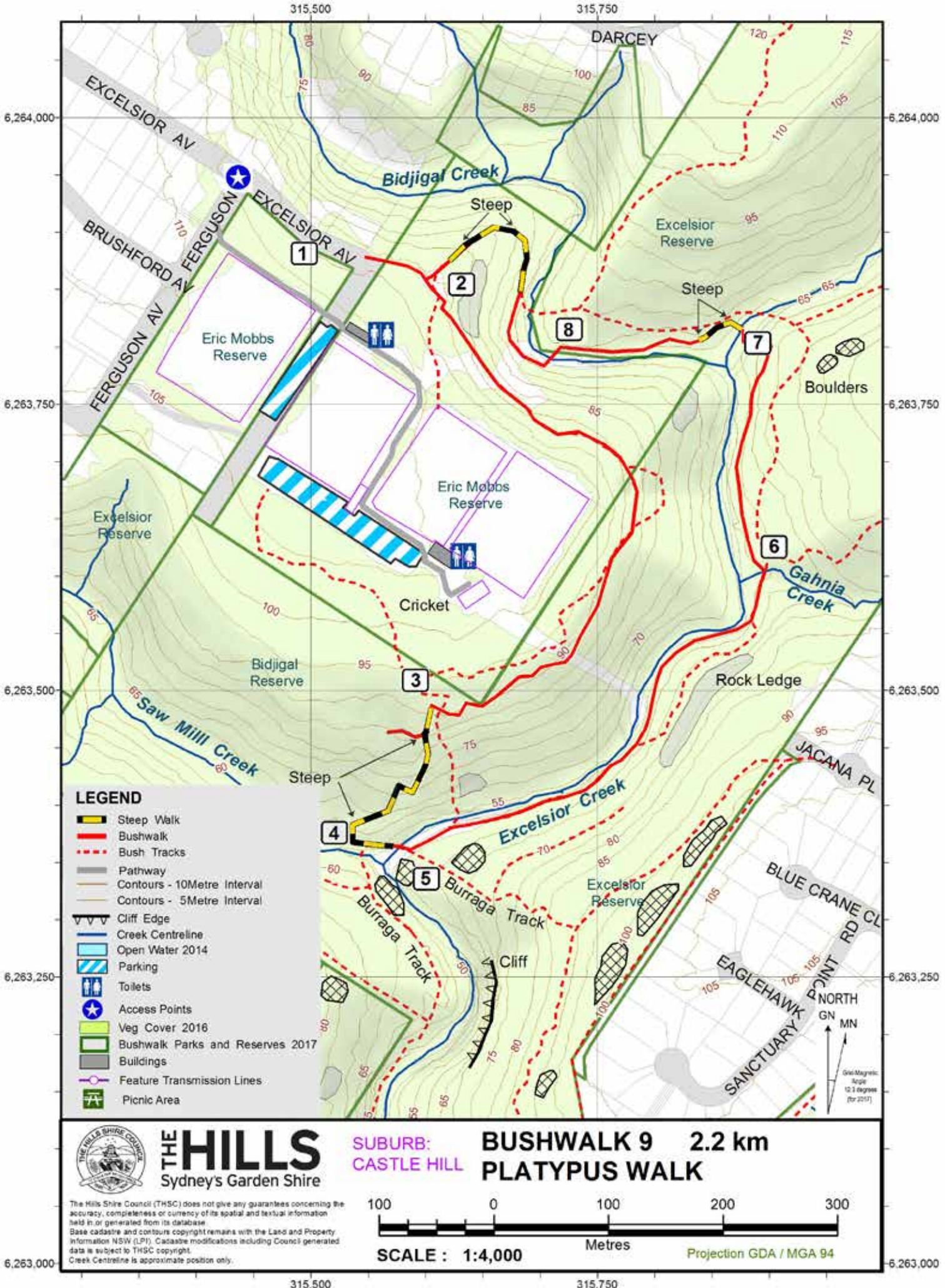
The Hills Shire Council (THSC) does not give any guarantees concerning the accuracy, completeness or currency of its spatial and textual information held in, or generated from its database.
Base cadastre and contours copyright remains with the Land and Property Information NSW (LPI). Cadastre modifications including Council generated data is subject to THSC copyright.
Creek Centreline is approximate position only.
2018 Aerial Photography copyright Jacobs SKM.



SCALE : 1:4,000

Metres

Projection GDA / MGA 94



LEGEND

- Steep Walk
- Bushwalk
- Bush Tracks
- Pathway
- Contours - 10Metre Interval
- Contours - 5Metre Interval
- Cliff Edge
- Creek Centreline
- Open Water 2014
- Parking
- Toilets
- Access Points
- Veg Cover 2016
- Bushwalk Parks and Reserves 2017
- Buildings
- Feature Transmission Lines
- Picnic Area

THE HILLS
Sydney's Garden Shire

SUBURB: CASTLE HILL

BUSHWALK 9 2.2 km
PLATYPUS WALK

The Hills Shire Council (THSC) does not give any guarantees concerning the accuracy, completeness or currency of its spatial and textual information held in or generated from its database.
Base cadastre and contours copyright remains with the Land and Property Information NSW (LPI). Cadastre modifications including Council generated data is subject to THSC copyright.
Creek Centreline is approximate position only.

