

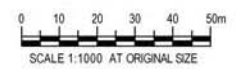
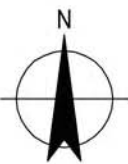


**MASTER PLAN NOTES**

- 1 POTENTIAL LOCATION FOR KISS 'N' RIDE DROP OFF FACILITIES
- 2 FUTURE EXTERNAL CYCLE PATH CONNECTIONS
- 3 FORMAL PEDESTRIAN AND CYCLE ACCESS INTO SPORTS PARK FROM ARNOLD AVENUE
- 4 NEW PUBLIC AMENITIES / CLUB FACILITIES BUILDING
- 5 CAR PARKING FOR 110 CARS, INCLUDING 4 DISABLED PARKING SPACES AND CENTRAL BIOFILTRATION SWALES TO COLLECT AND TREAT CAR PARK SURFACE RUN OFF. EASTERN-MOST CARPARK POSSIBLY REPLACED WITH ADDITIONAL INFORMAL BALL PLAY AREA IF DEPOT DOES NOT EVENTUATE
- 6 PLAZA / GATHERING SPACE
- 7 YOUTH SPACE / GROUP AREAS BETWEEN AMENITIES / CLUB FACILITIES AND INFORMAL BALL PLAY AREA WITH PROPRIETARY SHELTER, SEATING PLINTHS / PLATFORMS AND BICYCLE PARKING
- 8 YOUNG CHILDRENS / INFANTS LOCAL PLAYGROUND OVER 2 TIERS TO PROVIDE INTEREST AND ADDRESS CHANGES IN LEVEL. INTEGRATE LANDSCAPE SPACES AND SEATING THROUGHOUT PLAYGROUND FOR SHADE AND SUPERVISION
- 9 MAIN STAIRWAY / TERRACES AND RAMP ACCESS FROM PLAZA SPACE TO PLAYING FIELDS. STAIRWAY HAS DUAL FUNCTION AS SPECTATOR SEATING / VIEWING AREAS
- 10 EXTEND SPECTATOR TERRACE SEATING AS LOW INTENSITY USE ADJACENT TO POTENTIAL DEPOT
- 11 INFORMAL RECREATION NODES ALONG PATH NETWORK BETWEEN PLAYING FIELDS AND ADJOINING FUTURE RESIDENTIAL. INCLUDE PROPRIETARY SHELTERS, PICNIC SETTINGS, BBQS, BINS AND SEATING. SHADE TREES FRAME SHELTER LOCATIONS AND PROVIDE ADDITIONAL SHADE.
- 12 INFORMAL SPECTATOR VIEWING AREAS, GRASSED EMBANKMENTS AND MOUNDING
- 13 INFORMAL KICK AND THROW AREA ADJACENT TO RECREATION FACILITIES. FRAMED BY SHADE TREES
- 14 INTEGRATED LANDSCAPE BUFFER TO NORTHERN BOUNDARY. BUFFER PROVIDES VISUAL SCREENING FOR ADJACENT RESIDENTS, ENHANCEMENT OF HABITAT CONNECTIONS TO STRANGERS CREEK AND ENHANCED AMENITY ALONG PEDESTRIAN PATHWAY
- 15 POTENTIAL FUTURE LOCATION FOR COUNCIL SATELLITE DEPOT, OR POSSIBLE CAR PARK
- 16 UNDERGROUND TANK. REFER TO CONCEPTUAL STORMWATER CAPTURE AND REUSE STRATEGY.
- 17 TREE AND GROUNDCOVER PLANTING TO STEEP EMBANKMENTS BETWEEN ARNOLD AVENUE AND CAR PARK TO DISCOURAGE UNSAFE ACCESS WHILE ALLOWING VIEWS
- 18 SCREEN PLANTING TO CARPARK OR POTENTIAL FUTURE SATELLITE DEPOT
- 19 MAX. 1 - 1.5m HIGH RETAINING WALLS AT END OF CAR PARK WITH MAX. 1:4 SLOPE TO TOP OF WALL TO ACCOMMODATE REQUIRED GRADES

**LEGEND**

- PROPERTY BOUNDARY
- INFORMAL BALL PLAY AREA (FLOODLIT FOR TRAINING AND GAMES)
- MULTI-PURPOSE SPORTING FIELDS - SOCCER/CRICKET (FLOODLIT FOR TRAINING PURPOSES)
- PAVED PEDESTRIAN GATHERING AREAS AROUND FORMAL FACILITIES
- SHARED PEDESTRIAN AND CYCLE PATHS (2.5m WIDE. OPPORTUNITY FOR FITNESS TRAIL ALONG PART OF CIRCUIT)
- INFORMAL GRASSED RECREATION AREAS
- BIORETENTION BASINS / SWALES TO CAR PARK AREA
- INTEGRATED LANDSCAPE BUFFER ZONES
- PROPOSED SHADE TREE PLANTING TO INFORMAL RECREATION AREAS AND CAR PARKS
- PROPOSED FEATURE / AVENUE TREES AT ENTRIES AND KEY VISUAL / PEDESTRIAN LINKS
- PRIMARY PEDESTRIAN ENTRY POINTS AND CONNECTIONS TO ADJACENT RESIDENTIAL AREAS AND OPEN SPACE
- PRIMARY VEHICLE ENTRY POINT TO CAR PARKING AREAS - SPORTS PARK AND POTENTIAL DEPOT (OPPORTUNITY FOR SIGNAGE)
- INDICATIVE FIELD LIGHTING LOCATIONS
- INDICATIVE SEATING LOCATIONS



**PRELIMINARY**

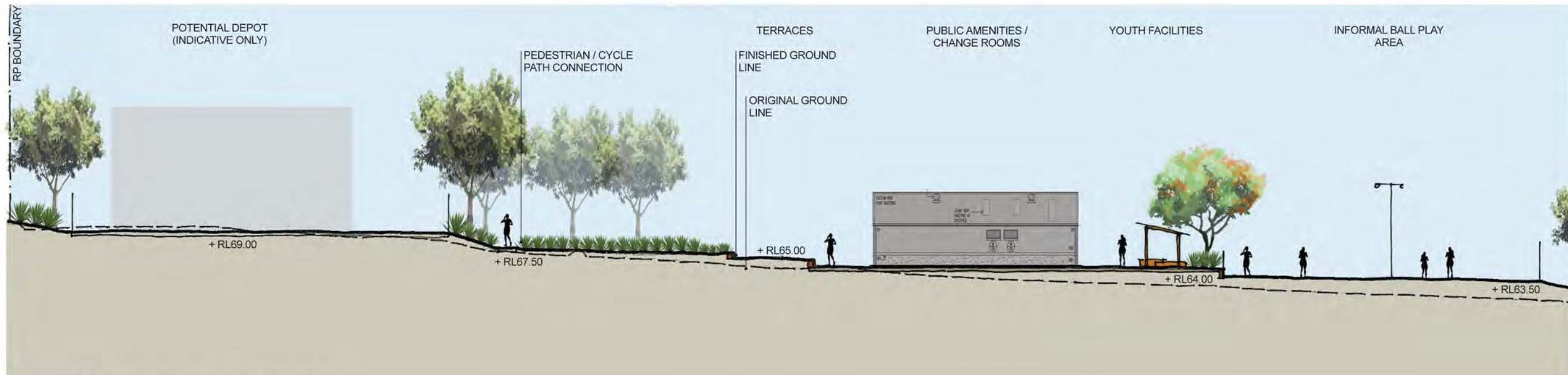
rev	description	app'd	date
C	EXHIBITION ISSUE	EN*	03.02.14
B	LAYOUT AMENDED	EN*	14.11.13

THE HILLS SHIRE COUNCIL  
 ARNOLD AVENUE SPORTS COMPLEX  
 Draft Illustrative Landscape  
 Master Plan

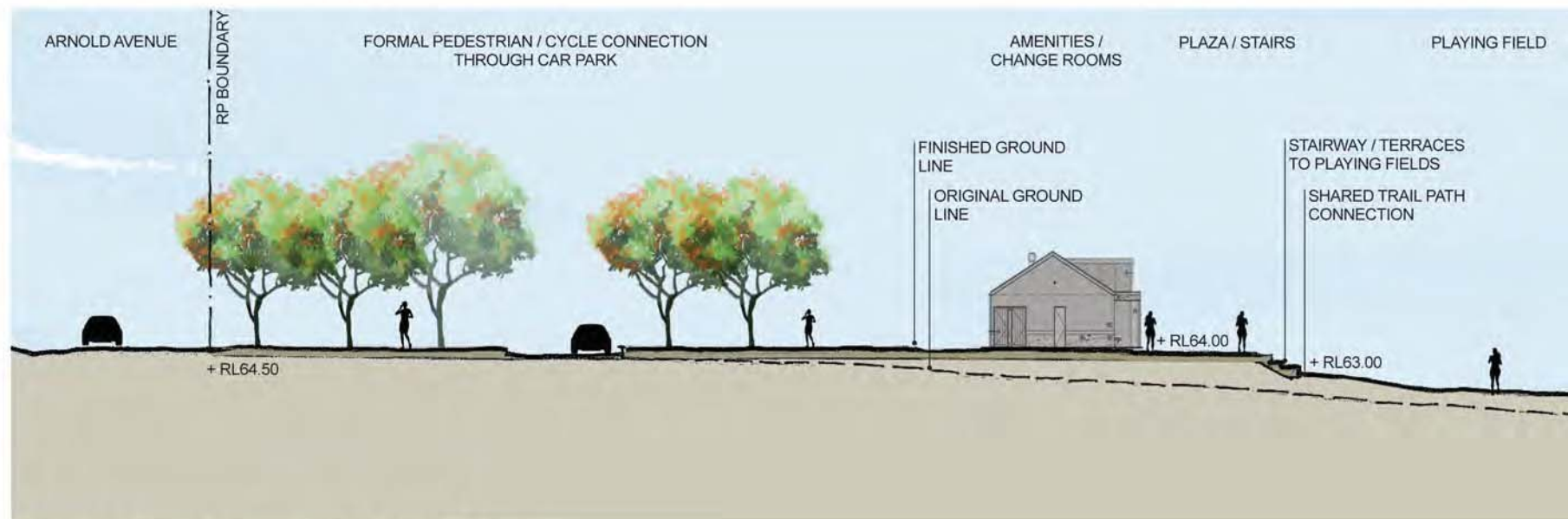


scale | 1:1000 for A1 job no. | 41-25437  
 date | FEB 2014 rev no. | C

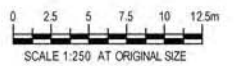
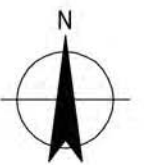
approved (PD) E.NICHOLAOU\* SK005



Section A-A Formal Facilities (approx. 1:500 at A3)



Section B-B Formal Facilities (approx. 1:500 at A3)



**PRELIMINARY**

rev	description	app'd	date
B	EXHIBITION ISSUE	EN*	03.02.14
A	INITIAL ISSUE	EN*	21.11.13

THE HILLS SHIRE COUNCIL  
 ARNOLD AVENUE SPORTS COMPLEX  
 Formal Facilities  
 Cross Sections



scale 1:250 for A1 job no. 41-25437  
 date FEB 2014 rev no. B

approved (PD) E.NICHOLAOU\* SK007