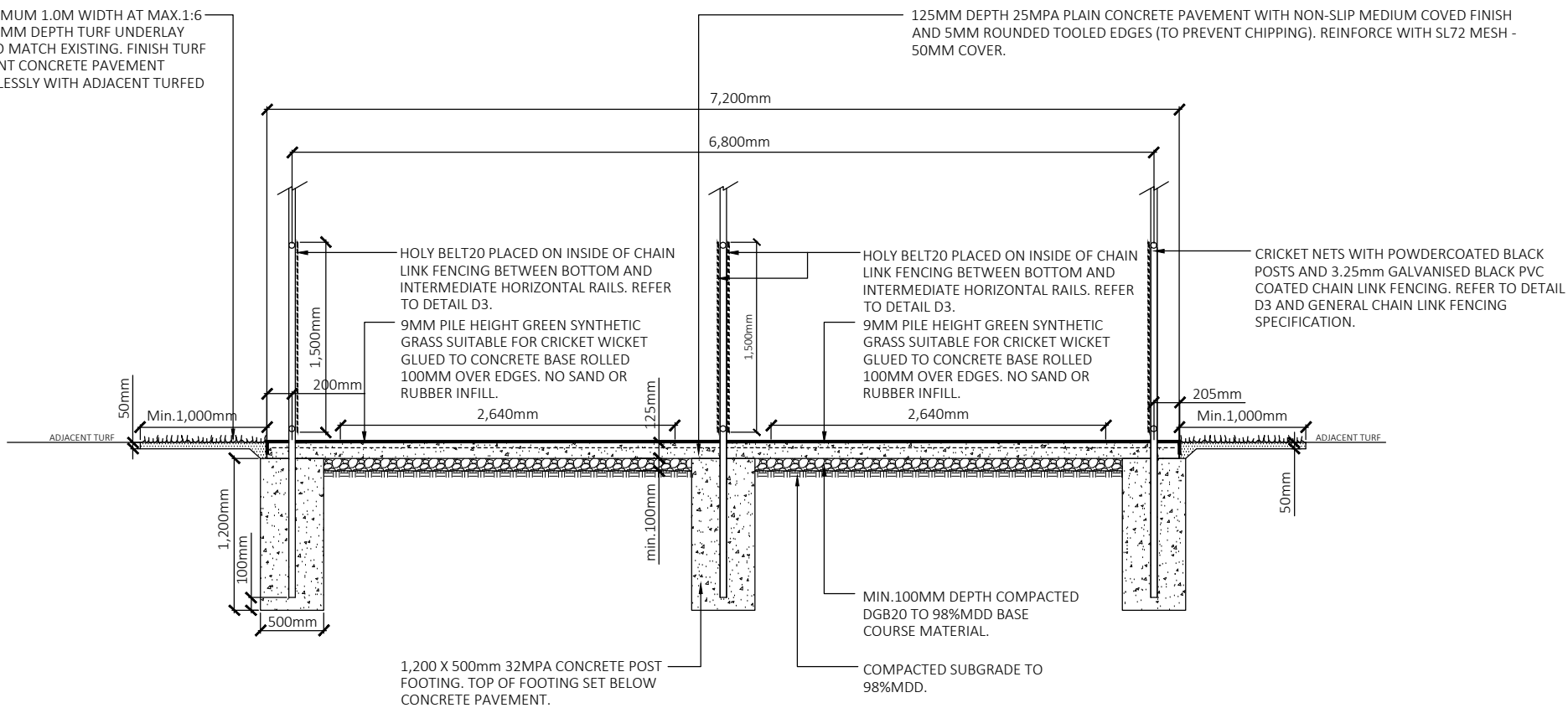


DETAIL D3  
Scale: 1:100

RE-TURF EDGES MINIMUM 1.0M WIDTH AT MAX.1:6 GRADE WITH MIN.50MM DEPTH TURF UNDERLAY AND KIKUYU TURF TO MATCH EXISTING. FINISH TURF FLUSH WITH ADJACENT CONCRETE PAVEMENT SURFACE AND SEAMLESSLY WITH ADJACENT TURFED AREAS.



DETAIL D4  
Scale: 1:50

GENERAL PAVEMENT SPECIFICATION

- CONCRETE CONSTRUCTION AND MATERIALS TO CONFORM WITH AS3600:2008.
- PRACTICE WICKETS LOCATION AND SETOUT TO BE APPROVED BY COUNCIL PRIOR TO COMMENCEMENT OF EXCAVATION.
- ORIENTATION OF WICKETS IS TO BE ON A NORTH / SOUTH AXIS UNLESS DESIGNED OTHERWISE. LAYOUT TO BE DUPLICATED TO THE SIDE FOR ADDITIONAL PRACTICE WICKET LANES AS DIRECTED BY COUNCIL.
- SUBGRADE: COMPACT TO 98% MDD. SUBGRADE IS TO BE PROOF ROLLED USING MIN.10 TONNE ROLLER.
- SUBGRADE TO BE COMPACTED TO 98%MDD WITH ALL SOFT AREAS OVER EXCAVATED AS DIRECTED BY COUNCIL AND FILLED WITH IMPORTED DGB20 COMPACTED TO 98%MDD.
- PAVEMENT CROSS FALL TO BE 1% MAX.
- CONCRETE: 25MPA 80MM SLUMP.
- FINISH: NON-SLIP MEDIUM COVED FINISH WITH 5MM (ROUNDED) TOOLED EDGES (TO PREVENT CHIPPING).
- DEPTH: 125MM.
- CONCRETE COLOUR: PLAIN GREY.
- BASE COURSE: MINIMUM 100MM DEPTH DGB20 COMPACT TO 98% MDD.
- REINFORCEMENT: SL72 MESH WITH MINIMUM 50MM COVER.
- EXPANSION JOINTS: CONNOLLY EXJ12530 EXPANSION JOINT TO MANUFACTURERS SPECIFICATIONS PLACED EVENLY AS SHOWN ON PLAN VIEW DETAIL. PULLOUT TOP PROFILE AND APPLY GREY SILICONE SEALANT TO JOINT
- CONTROL JOINTS: 3MM WIDE X 25MM DEEP SAWCUT CONTROL JOINT PLACED EVENLY BETWEEN EXPANSION JOINTS AS SHOWN ON PLAN VIEW DETAIL.

FENCING POST SPECIFICATION

COMPONENT	DIAMETER	GRADE
CORNER POSTS	DN80	HEAVY DUTY
INTERMEDIATE POSTS	DN50	HEAVY DUTY
BRACING STAYS	DN40	MEDIUM DUTY
HORIZONTAL RAILS	DN32	MEDIUM DUTY
SLEEVES	TO SUIT	MEDIUM

GENERAL CHAIN LINK FENCING SPECIFICATION

- CHAIN-LINK FENCING TO COMPLY WITH AS1745.5-2010 PART 5.
- FOOTING DEPTHS TO BE INCREASED BY 300MM IN LOOSE OR SANDY SOIL OR AS DIRECTED BY COUNCIL.
- ALL RAILS, POSTS AND FITTINGS TO BE STRENGTH GRADE 250MPa TO AS/NZS 1163, HEAVY GALVANIZED W10Z TO AS 1725-2.2 AND POWDER COATED BLACK.
- CHAIN-LINK FENCING TO COMPLY WITH AS1725.1-2010 AND AS1725.4-2010.
- CHAIN-LINK HEAVY DUTY FABRIC 50 PITCH X 3.15mm BEZINAL 2000 WIRE CORE (OR HEAVY GALVANISED W02Z QUALITY) AND FBP FUSION BONDED PVC WITH KNUCKLE/KNUCKLE KK SELVEDGE.
- LACING WIRE TO BE BLACK 2.00MM CORE W02Z GALVANISED FUSE BONDED POLYMER COATED.
- CHAIN -LINK FABRIC TO BE STRAINED TAUT AND LACED (NOT CONTINUOUSLY LACED) OR TIED THROUGH EACH DIAMOND AT SELVEDGE EDGE TO ALL PIPE RAILS AND END POSTS & TIED TO INTERMEDIATE POSTS WITH DOUBLE TIES AT EVERY 4TH DIAMOND.
- TIE WIRE ENDS TO BE TWISTED TWICE, NEATLY CUT OFF AND BENT OVER FACING AWAY FROM WICKETS TO AVOID INJURY.
- TOP/MIDDLE/BOTTOM RAILS CLAMPED TO POSTS WITH SPLIT CLAMP ON FITTINGS USING FLUSH HEAD. ALL POWDERCOATED BLACK.
- SLEEVE NUTS. INSTALL TOP RAILS IN CONTINUOUS LENGTHS CLAMPED TO TOP OF POSTS WITH SCREW & SOCKET SPLICE JOINS AT 6500mm INTERVALS. ALTERNATIVELY, BUTT JOIN (MINIMUM 3 PANEL LENGTHS) CENTRALLY OVER POST WITH INTERNAL SLEEVE JOINER. BOTTOM RAIL TO BE INSTALLED IN ONE PIECE WITHOUT JOINS, CLAMPED TO POSTS, AND SET 100mm ABOVE GROUND. ALL POWDERCOATED BLACK.
- CONSTRUCTION OF POSTS AND RAILS TO USE STANDARD BOLTED SPLIT CLAMP-ON FITTINGS. ALL POWDERCOATED BLACK.